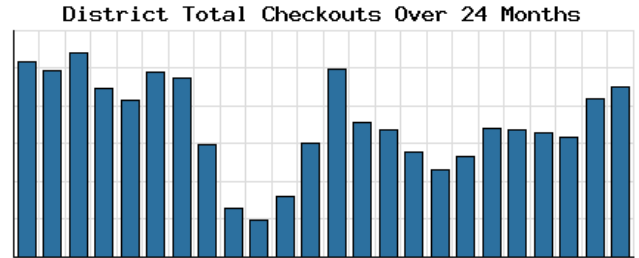


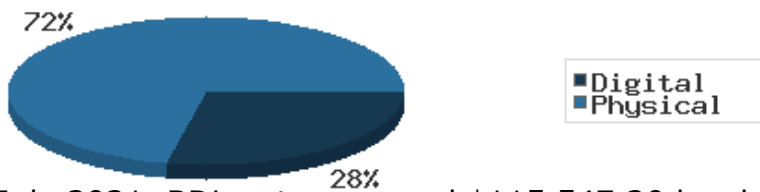
Monthly Stats Brief Narrative

Through July 2021, the number of patrons entering our buildings somewhat decreased system-wide compared to this same time year-to-date the previous year. Combined physical and digital use of library materials increased year-to-date compared to 2020. About 7% of our registered cardholders checked out a physical item this past month, while about 2% of registered cardholders checked out a digital item.



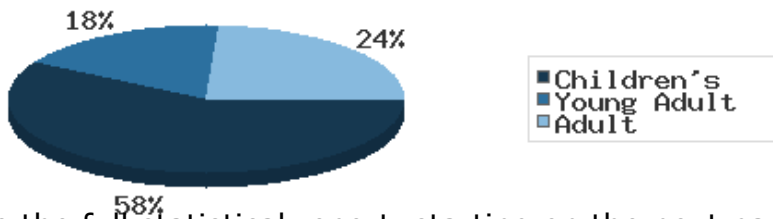
Digital usage has comprised about 28% of total materials use year-to-date through July 2021, and digital usage slightly decreased from this time in 2020.

Digital vs. Physical Circulation YTD



In July 2021, BDL patrons saved \$115,547.20 by checking out 9,744 physical items from the library. Our programming for all ages and our digital services further increase the library's value to the community, bringing the total estimated value to \$144,717.09.

Programs Offered in 2021 YTD



Compared to this time year-to-date 2020, the number of programs BDL offered has greatly increased. Attendance at programs greatly decreased over this same period.

There were a total of 9 visits to the library for curbside service.

See the full statistical report, starting on the next page, for details and more graphs. The most up-to-date stats are always available online and interactive at <https://www.BranchDistrictLibrary.org/stats>.

Attendance

July 2021

	BDL Monthly Total	BDL YTD	BDL Year End (Year-over-Year Change)				
			2020	2019	2018	2017	2016
Attendance	8,511	36,778 (-7%)	63,336 (-66%)	183,677 (-4%)	191,866 (-1%)	193,922 (-4%)	200,991 (+3%)
Hours Open	1,008.50	5,986.50 (+67%)	7,132.50 (-37%)	11,250.25 (-9%)	12,312.00 (+13%)	10,869.15 (-0%)	10,877.50 (+25%)
Number of Hours Scheduled Open Each Week (Tracking Since 1/2018)	239.00		237.00 (-2%)	241.00 (-2%)	245.00	0.00	0.00

Patrons

July 2021

	BDL Monthly Total	BDL YTD	BDL Year End (Year-over-Year Change)				
			2020	2019	2018	2017	2016
Population in our Service Area (Tracking Since 2018)	44,959	45,022 (avg) (+0%)	44,931 (avg) (-0%)	45,093 (avg) (-0%)	45,113 (avg)	0 (avg)	0 (avg)
Library Card Holders	22,499	22,106 (avg) (+6%)	21,365 (avg) (+4%)	20,493 (avg) (-4%)	21,350 (avg) (-16%)	25,346 (avg) (+3%)	24,554 (avg) (+4%)
Patrons Who Checked Out a Physical Item	1,618	1,270 (avg) (+24%)	1,102 (avg) (-48%)	2,136 (avg) (-2%)	2,180 (avg) (-5%)	2,305 (avg) (-1%)	2,336 (avg) (-1%)
New Library Card Holders Added	72	306 (+37%)	1,304 (+111%)	618 (-39%)	1,021 (+21%)	844 (-15%)	989 (-9%)
In-House Holds Filled for Our Library Card Holders	885	6,741 (+55%)	9,467 (-10%)	10,527 (-4%)	10,987 (-6%)	11,650 (+12%)	10,407 (+2%)
Active Hoopla Users (Began 2016)	291	300 (avg) (-11%)	322 (avg) (+11%)	290 (avg) (+14%)	255 (avg) (+50%)	170 (avg) (+92%)	89 (avg)
Active OverDrive Users	210	224 (avg) (-9%)	234 (avg) (+10%)	213 (avg) (+18%)	180 (avg) (+27%)	143 (avg) (-1%)	144 (avg) (-1%)

Physical Collection

Tracking Item-Type Breakdown Since 8/2017

July 2021

	BDL Monthly Total	BDL YTD	BDL Year End (Year-over-Year Change)				
			2020	2019	2018	2017	2016
Physical Books and All other Print Materials in the Catalog	89,880		91,278 (-8%)	98,689 (-2%)	100,253 (-0%)	100,293	0
Physical Audiobooks in the Catalog	1,840		1,949 (+9%)	1,783 (-5%)	1,881 (+2%)	1,852	0
Physical Video Materials in the Catalog	11,561		11,352 (-1%)	11,460 (+8%)	10,579 (+1%)	10,519	0
Physical Music Recordings in the Catalog	42		178 (+12%)	159 (-53%)	337 (-2%)	345	0
TOTAL Physical Items in the Catalog	103,323		105,257 (-6%)	112,053 (-1%)	113,050 (+0%)	113,009 (-11%)	126,407 (-4%)

Digital Collection

Tracking Since 8/2017

July 2021

	BDL Monthly Total	BDL YTD	BDL Year End (Year-over-Year Change)				
			2020	2019	2018	2017	2016
Ebooks in All Digital Collections	525,439		480,691 (+30%)	370,666 (+21%)	306,595 (+33%)	230,178	0
Audiobooks in All Digital Collections	148,479		128,892 (+50%)	86,004 (+19%)	71,995 (+36%)	52,833	0
Video Materials in All Digital Collections	20,834		17,791 (+9%)	16,267 (+14%)	14,229 (-10%)	15,767	0
Music Recordings in All Digital Collections	279,566		273,294 (+1%)	271,614 (+13%)	239,705 (-14%)	280,259	0
Periodicals in All Digital Collections	3,517		3,668	0	0	0	0
TOTAL of All Digital Collections	977,835		904,336 (+21%)	744,551 (+18%)	632,524 (+9%)	579,037	0

Total Collection

Tracking Since 8/2017

July 2021

	BDL Monthly Total	BDL YTD	BDL Year End (Year-over-Year Change)				
			2020	2019	2018	2017	2016
Combined Physical Items	103,323		105,257 (-6%)	112,053 (-1%)	113,050 (+0%)	113,009 (-11%)	126,407 (-4%)
Combined Digital Collections	977,835		904,336 (+21%)	744,551 (+18%)	632,524 (+9%)	579,037	0
TOTAL of all Collections	1,077,641		1,009,593 (+18%)	856,604 (+15%)	745,574 (+8%)	692,046 (+447%)	126,407 (-4%)

Use of Physical Items

July 2021

	BDL Monthly Total	BDL YTD	BDL Year End (Year-over-Year Change)				
			2020	2019	2018	2017	2016
Checkouts of Cataloged Items	7,564	38,249 (+35%)	52,227 (-53%)	110,285 (-3%)	113,128 (-6%)	120,916 (+2%)	118,595 (-3%)
Renewals of Cataloged Items	812	4,860 (+42%)	7,181 (-47%)	13,490 (-1%)	13,607 (-8%)	14,804 (-4%)	15,480 (+0%)
Items Used in the Library But Not Checked Out	180	1,685 (+66%)	6,404 (+54%)	4,166 (+49%)	2,803 (-8%)	3,050 (+126%)	1,351 (+7,011%)
Checkouts of Uncataloged Items	168	664 (-9%)	1,001 (-70%)	3,294 (-16%)	3,904 (+38%)	2,839 (-38%)	4,578 (+4%)
Requests from BDL Patrons for Items at Other MeLCat Libraries, Actually Fulfilled	577	4,145 (+119%)	4,599 (-53%)	9,873 (+1%)	9,777 (+20%)	8,169 (+15%)	7,112 (+16%)
Requests from Other MeLCat Libraries for Items at BDL, Actually Fulfilled	443	3,174 (+147%)	3,175 (-58%)	7,582 (-23%)	9,810 (+25%)	7,867 (+11%)	7,068 (+46%)
TOTAL Use of Physical Items	9,744	52,777 (+44%)	74,587 (-50%)	148,690 (-3%)	153,029 (-3%)	157,645 (+2%)	154,184 (+1%)

Use of Digital Resources

July 2021

	BDL Monthly Total	BDL YTD	BDL Year End (Year-over-Year Change)				
			2020	2019	2018	2017	2016
OverDrive Checkouts	1,050	7,635 (-4%)	13,051 (+21%)	10,822 (+14%)	9,501 (+21%)	7,823 (+4%)	7,502 (+2%)
Hoopla Checkouts (Began 2016)	1,037	7,427 (-12%)	13,604 (+9%)	12,530 (-2%)	12,796 (+20%)	10,669 (+96%)	5,432
RB Digital Circulations (Began 2020)	0	352 (-46%)	1,066	0	0	0	0
All Other Digital Services	1,624	5,493 (+12%)	7,140 (-33%)	10,604 (+11%)	9,572 (-72%)	34,047 (-46%)	62,788 (+38%)
TOTAL Use of Digital Resources	3,711	20,907 (-5%)	34,861 (+3%)	33,956 (+7%)	31,869 (-39%)	52,539 (-31%)	75,722 (+43%)

Total Item Usage

July 2021

	BDL Monthly Total	BDL YTD	BDL Year End (Year-over-Year Change)				
			2020	2019	2018	2017	2016
Combined Checkouts of Physical Items	9,744	52,777 (+44%)	74,587 (-50%)	148,690 (-3%)	153,029 (-3%)	157,645 (+2%)	154,184 (+1%)
Combined Use of Digital Resources	3,711	20,907 (-5%)	34,861 (+3%)	33,956 (+7%)	31,869 (-39%)	52,539 (-31%)	75,722 (+43%)
TOTAL Uses of All BDL Items	13,455	73,684 (+26%)	109,448 (-40%)	182,646 (-1%)	184,898 (-12%)	210,184 (-9%)	229,906 (+12%)

Cataloging

July 2021

	BDL Monthly Total	BDL YTD	BDL Year End (Year-over-Year Change)				
			2020	2019	2018	2017	2016
Physical Items Added to the Catalog	988	7,249 (+48%)	9,938 (+2%)	9,719 (-12%)	11,056 (+0%)	11,009 (-1%)	11,091 (+29%)
Physical Items Deleted from the Catalog	705	13,754 (+1%)	17,003 (+58%)	10,769 (-2%)	10,941 (-55%)	24,366 (+53%)	15,968 (+84%)

Reference Questions

July 2021

	BDL Monthly Total	BDL YTD	BDL Year End (Year-over-Year Change)				
			2020	2019	2018	2017	2016
General Reference Questions in Person	882	4,416 (+96%)	4,347 (-50%)	8,748 (+32%)	6,641 (-12%)	7,537 (+20%)	6,285 (+124%)
Questions via Telephone Calls	427	3,534 (+99%)	4,559 (+11%)	4,111 (+6%)	3,866 (-24%)	5,079 (+10%)	4,622 (+60%)
Reference Questions Delivered Online	16	179 (+72%)	243 (-14%)	281 (+85%)	152 (-35%)	233 (-23%)	304 (+34%)
In-Person Questions on Computer or Internet Use	295	1,765 (+2%)	2,767 (-63%)	7,505 (+6%)	7,068 (-3%)	7,285 (+11%)	6,568 (+18%)
In-Person Questions about Our Online Databases	11	77 (+40%)	107 (-69%)	349 (-15%)	409 (+13%)	363 (+114%)	170 (+85%)
In-Person Tax Form Questions	1	231 (-18%)	286 (-12%)	326 (-37%)	518 (+5%)	493 (+4%)	473 (-18%)
TOTAL of All Reference Questions	1,632	10,202 (+65%)	12,309 (-42%)	21,320 (+14%)	18,654 (-11%)	20,990 (+14%)	18,422 (+52%)

Notary Services

Began 9/2017 at Coldwater Only

July 2021

	BDL Monthly Total	BDL YTD	BDL Year End (Year-over-Year Change)				
			2020	2019	2018	2017	2016
Patrons Who Used our Free Notary Services	14	34 (+79%)	46 (-52%)	95 (+44%)	66 (+371%)	14	0
Documents Notarized	29	51 (+96%)	54 (-56%)	124 (+85%)	67 (+253%)	19	0

MeLCat

July 2021

	BDL Monthly Total	BDL YTD	BDL Year End (Year-over-Year Change)				
			2020	2019	2018	2017	2016
Requests from BDL Patrons for Items at Other MeLCat Libraries	621	4,369 (+117%)	5,026 (-52%)	10,538 (+1%)	10,462 (+20%)	8,699 (+14%)	7,643 (+5%)
Requests from BDL Patrons for Items at Other MeLCat Libraries, Actually Fulfilled	577	4,145 (+119%)	4,599 (-53%)	9,873 (+1%)	9,777 (+20%)	8,169 (+15%)	7,112 (+16%)
Requests from Other MeLCat Libraries for Items at BDL	450	3,450 (+100%)	4,067 (-52%)	8,405 (-18%)	10,296 (+29%)	7,994 (+13%)	7,096 (+18%)
Requests from Other MeLCat Libraries for Items at BDL, Actually Fulfilled	443	3,174 (+147%)	3,175 (-58%)	7,582 (-23%)	9,810 (+25%)	7,867 (+11%)	7,068 (+46%)

Programs Held

July 2021

	BDL Monthly Total	BDL YTD	BDL Year End (Year-over-Year Change)				
			2020	2019	2018	2017	2016
Early Childhood Literacy Programs Held (Tracking since 2021)	1	42	0	0	0	0	0
Juvenile Programs Held	21	117 (-62%)	551 (-31%)	804 (+10%)	730 (+1%)	720 (+19%)	604 (+5%)
Young Adult Programs Held	1	39 (-64%)	138 (-55%)	304 (-10%)	338 (+41%)	239 (+47%)	163 (+8%)
Adult Programs Held	0	57 (-53%)	257 (+54%)	167 (+23%)	136 (-7%)	146 (-34%)	220 (+40%)
All-Ages Programs Held (Tracking since 2021)	2	32	0	0	0	0	0
Early Childhood Literacy Summer Reading Programs Held (Tracking since 2021)	1	9	0	0	0	0	0
Juvenile Summer Reading Events Held	40	92	0	173 (+52%)	114 (+20%)	95 (+7%)	89 (+6%)
Young Adult Summer Reading Events Held	14	25	0	61 (+24%)	49 (-14%)	57 (+97%)	29 (-66%)
Adult Summer Reading Events Held	17	27	0	17 (+467%)	3	0	3 (-40%)
All-Ages Summer Reading Programs Held (Tracking since 2021)	15	26	0	0	0	0	0
Computer Classes Held	0	1	1 (-99%)	81 (+305%)	20 (-9%)	22 (+57%)	14 (-36%)
TOTAL of All Programs	568	1,188 (+122%)	947 (-41%)	1,607 (+16%)	1,390 (+9%)	1,279 (+14%)	1,122 (+4%)

Program Attendance

July 2021

	BDL Monthly Total	BDL YTD	BDL Year End (Year-over-Year Change)				
			2020	2019	2018	2017	2016
Attendees at Early Childhood Literacy Programs (Tracking since 2021)	14	939	0	0	0	0	0
Attendees at Juvenile Programs	391	2,134 (-86%)	25,317 (+73%)	14,654 (-7%)	15,725 (+2%)	15,351 (+48%)	10,371 (+23%)
Attendees at Young Adult Programs	10	316 (-89%)	3,204 (+29%)	2,489 (-23%)	3,218 (-15%)	3,806 (+276%)	1,011 (+14%)
Attendees at Adult Programs	0	1,549 (-82%)	16,263 (+519%)	2,627 (+33%)	1,970 (-0%)	1,979 (-3%)	2,048 (-5%)
Attendees at All-Ages Programs (Tracking since 2021)	276	1,513	0	0	0	0	0
Attendees at Early Childhood Literacy Summer Reading Programs (Tracking since 2021)	34	146	0	0	0	0	0
Attendees at Juvenile Summer Reading Events	752	1,780	0	4,186 (+8%)	3,864 (+24%)	3,116 (-20%)	3,904 (+56%)
Attendees at Young Adult Summer Reading Events	103	181	0	279 (-16%)	333 (-50%)	671 (+127%)	295 (+14%)
Attendees at Adult Summer Reading Events	127	179	0	310 (+265%)	85	0	21 (-73%)
Attendees at All-Ages Summer Programs (Tracking since 2021)	457	730	0	0	0	0	0
Attendees at Computer Classes	0	1	0	26 (+30%)	20 (-5%)	21 (+75%)	12 (-59%)
TOTAL of All Program Attendance	2,164	9,468 (-65%)	44,784 (+82%)	24,571 (-3%)	25,215 (+1%)	24,944 (+41%)	17,662 (+23%)

Summer Reading Overview

July 2021

	BDL Monthly Total	BDL YTD	BDL Year End (Year-over-Year Change)				
			2020	2019	2018	2017	2016
Juveniles Signed Up for Summer Reading Program	261	261 (+187%)	91 (-87%)	711 (-5%)	747 (-35%)	1,153 (+19%)	967 (+13%)
Young Adults Signed up for Summer Reading Program	51	51 (+76%)	29 (-78%)	134 (-65%)	378 (-2%)	385 (+241%)	113 (-64%)
Adults Signed Up for Summer Reading Program	72	72 (+118%)	33 (-79%)	159 (-36%)	248 (+112%)	117 (+36%)	86 (+1%)
Juveniles who Completed Summer Reading Program	152	152 (+67%)	91 (-76%)	385 (+48%)	260 (-50%)	518 (+13%)	459 (-10%)
Young Adults who Completed Summer Reading Program	24	24 (-17%)	29 (-63%)	79 (-41%)	135 (-50%)	268 (+332%)	62 (-49%)
Adults who Completed Summer Reading Program	21	21 (-36%)	33 (-72%)	118 (-28%)	165 (+72%)	96 (+60%)	60 (+7%)
Juvenile Summer Reading Events Held	40	92	0	173 (+52%)	114 (+20%)	95 (+7%)	89 (+6%)
Young Adult Summer Reading Events Held	14	25	0	61 (+24%)	49 (-14%)	57 (+97%)	29 (-66%)
Adult Summer Reading Events Held	17	27	0	17 (+467%)	3	0	3 (-40%)
Attendees at Juvenile Summer Reading Events	752	1,780	0	4,186 (+8%)	3,864 (+24%)	3,116 (-20%)	3,904 (+56%)
Attendees at Young Adult Summer Reading Events	103	181	0	279 (-16%)	333 (-50%)	671 (+127%)	295 (+14%)
Attendees at Adult Summer Reading Events	127	179	0	310 (+265%)	85	0	21 (-73%)

Summer Reading Program Signups

July 2021

	BDL Monthly Total	BDL YTD	BDL Year End (Year-over-Year Change)				
			2020	2019	2018	2017	2016
Juveniles Signed Up for Summer Reading Program	261	261 (+187%)	91 (-87%)	711 (-5%)	747 (-35%)	1,153 (+19%)	967 (+13%)
Young Adults Signed up for Summer Reading Program	51	51 (+76%)	29 (-78%)	134 (-65%)	378 (-2%)	385 (+241%)	113 (-64%)
Adults Signed Up for Summer Reading Program	72	72 (+118%)	33 (-79%)	159 (-36%)	248 (+112%)	117 (+36%)	86 (+1%)
TOTAL Summer Reading Program Signups	384	384 (+151%)	153 (-85%)	1,004 (-27%)	1,373 (-17%)	1,655 (+42%)	1,166 (-7%)

Summer Reading Program Completions

July 2021

	BDL Monthly Total	BDL YTD	BDL Year End (Year-over-Year Change)				
			2020	2019	2018	2017	2016
Juveniles who Completed Summer Reading Program	152	152 (+67%)	91 (-76%)	385 (+48%)	260 (-50%)	518 (+13%)	459 (-10%)
Young Adults who Completed Summer Reading Program	24	24 (-17%)	29 (-63%)	79 (-41%)	135 (-50%)	268 (+332%)	62 (-49%)
Adults who Completed Summer Reading Program	21	21 (-36%)	33 (-72%)	118 (-28%)	165 (+72%)	96 (+60%)	60 (+7%)
TOTAL Summer Reading Program Completions	197	197 (+29%)	153 (-74%)	582 (+4%)	560 (-37%)	882 (+52%)	581 (-16%)

Library-Provided Computer Services

July 2021

	BDL Monthly Total	BDL YTD	BDL Year End (Year-over-Year Change)				
			2020	2019	2018	2017	2016
One-hour sessions on Library Wifi	15,237 ¹	159,700 (-9%)	284,892 (-40%)	474,750 (+2%)	465,219 (+9%)	425,714 (+4%)	410,437 (+17%)
Desktop, Laptop, and Tablet Computers Available for Public Use	91		88	88 (-1%)	89 (+22%)	73	73
Sessions on Library-Provided Computers	1,643	5,072 (-27%)	9,604 (-73%)	35,720 (-22%)	45,687 (+3%)	44,181 (+6%)	41,513 (-11%)
Hours Library-Provided Computers Used (Tracking Since 2018)	985.03	2,823.78 (-40%)	6,031.58 (-75%)	24,280.36 (-2%)	24,701.55	0.00	0.00
Desktop, Laptop, and Tablet Computers Available for Staff Use	55		52	52 (+4%)	50 (+22%)	41	41

Notes

1. Data was unavailable for Alganssee, Bronson, Quincy, and Sherwood due to power outages. These will be updated for next month.

Website Stats

July 2021

	BDL Monthly Total	BDL YTD	BDL Year End (Year-over-Year Change)				
			2020	2019	2018	2017	2016
Monthly Website Sessions	4,672	28,006 (+23%)	41,586 (-28%)	58,161 (+28%)	45,594 (-38%)	73,326 (-2%)	75,139 (+3%)
Monthly Website Page Views	33,603	80,471 (+55%)	92,094 (-29%)	129,778 (+9%)	118,634 (-33%)	177,799 (-2%)	182,084 (+7%)

Faxes, Prints, and Sales

July 2021

	BDL Monthly Total	BDL YTD	BDL Year End (Year-over-Year Change)				
			2020	2019	2018	2017	2016
Fax Pages Received	2	90 (-18%)	149 (-57%)	350 (-16%)	419 (+61%)	260 (+19%)	219 (+27%)
Fax Pages Sent	567	3,446 (+74%)	3,935 (-59%)	9,524 (+3%)	9,249 (+138%)	3,879 (+123%)	1,741 (-7%)
Free Prints for Job Seekers	212	799 (+14%)	1,091 (-61%)	2,796 (-23%)	3,631 (+16%)	3,128 (+9%)	2,878 (+23%)
Black and White Patron Prints (Tracking Since 6/2016)	5,068	30,647 (+71%)	33,177 (-56%)	75,818 (-6%)	81,016 (+7%)	75,606 (+113%)	35,561
Color Patron Prints (Tracking Since 6/2016)	829	4,926 (+100%)	4,709 (-58%)	11,299 (-8%)	12,285 (+20%)	10,253 (+154%)	4,036
Flash Drives Sold (Tracking Since 6/2016)	1	6 (-33%)	18 (-51%)	37 (-10%)	41 (-27%)	56 (+4%)	54
Earbuds Sold (Tracking Since 6/2016)	29	62 (-35%)	131 (-72%)	462 (-14%)	538 (+29%)	416 (+151%)	166

Fines and Fees

Overdue Fines Dropped in 2017

July 2021

	BDL Monthly Total	BDL YTD	BDL Year End (Year-over-Year Change)				
			2020	2019	2018	2017	2016
Fines and Fees Payments Received	\$ 216.50	\$ 1,006.04 (+29%)	\$ 1,717.01 (-44%)	\$ 3,092.62 (+28%)	\$ 2,412.73 (-68%)	\$ 7,628.31 (-24%)	\$ 10,062.96 (-30%)
Outstanding Fines and Fees	\$ 2,910.51		53,362.56 (-4%)	55,588.42 (-0%)	55,850.27 (-34%)	84,232.33 (-63%)	228,102.90 (+3%)

Debt Collections
Unique Management Services, Inc.
Tracking Since 2014

July 2021

	BDL Monthly Total	BDL YTD	BDL Year End (Year-over-Year Change)				
			2020	2019	2018	2017	2016
Fine Payments as a Result of Collection Agency's Efforts	\$ 0.00	\$ 0.00	\$ 0.00	\$ 268.00 (-94%)	\$ 4,183.45 (+1,727%)	\$ 229.00 (-76%)	\$ 947.13 (+16%)
Library Materials Returned as a Result of Collection Agency's Efforts	\$ 0.00	\$ 0.00	\$ 0.00	\$ 0.00	\$ 462.00 (-48%)	\$ 888.95 (-33%)	\$ 1,317.93 (-2%)
What We Paid Collection Agency for Their Services	\$ 0.00	\$ 0.00	\$ 0.00	\$ 134.10 (-75%)	\$ 528.66 (-5%)	\$ 558.08 (-45%)	\$ 1,022.23 (-3%)

Value to Our Service Area

Visit <https://www.BranchDistrictLibrary.org/value>
to learn how we determine these numbers.

July 2021

	BDL Monthly Total	BDL YTD	BDL Year End (Year-over-Year Change)				
			2020	2019	2018	2017	2016
Value from Physical Item Checkouts	\$ 115,547.20	\$ 585,814.94 (+33%)	\$ 822,979.52 (-53%)	\$ 1,755,554.08 (-7%)	\$ 1,888,907.75 (-12%)	\$ 2,135,671.28 (+0%)	\$ 2,132,387.79 (-2%)
Value from Attending Programs (Tracking Since 1/2018)	\$ 10,700.00	\$ 46,845.00 (+22%)	\$ 126,690.00 (+7%)	\$ 118,485.00 (-6%)	\$ 125,795.00	\$ 0.00	\$ 0.00
Value from Fax Service (Tracking Since 1/2018)	\$ 569.00	\$ 3,536.00 (+71%)	\$ 4,056.00 (-60%)	\$ 10,205.00 (+6%)	\$ 9,668.00	\$ 0.00	\$ 0.00
Value from Employment Prints (Tracking Since 1/2018)	\$ 31.80	\$ 118.65 (+13%)	\$ 162.75 (-61%)	\$ 419.40 (-23%)	\$ 544.65	\$ 0.00	\$ 0.00
Value from Notary Services (Tracking Since 1/2018)	\$ 70.00	\$ 170.00 (+89%)	\$ 225.00 (-53%)	\$ 475.00 (+44%)	\$ 330.00	\$ 0.00	\$ 0.00
Value from Digital Services (Tracking Since 1/2018)	\$ 14,844.00	\$ 83,628.00 (-3%)	\$ 138,316.00 (+2%)	\$ 135,824.00 (+7%)	\$ 127,476.00	\$ 0.00	\$ 0.00
Value from Using Library Computers (Tracking Since 1/2018)	\$ 2,955.09	\$ 8,471.34 (-40%)	\$ 18,094.74 (-75%)	\$ 72,841.08 (-2%)	\$ 74,104.66	\$ 0.00	\$ 0.00
Value from Using Library Wifi (Tracking Since 1/2018)	\$ 0.00	\$ 10,112.41 (-18%)	\$ 19,942.44 (-40%)	\$ 33,232.50 (+2%)	\$ 32,565.33	\$ 0.00	\$ 0.00
TOTAL Value of Free Library Services	\$ 144,717.09	\$ 738,696.34 (+24%)	\$ 1,130,466.45 (-47%)	\$ 2,127,036.06 (-6%)	\$ 2,259,391.39 (+6%)	\$ 2,135,671.28 (+0%)	\$ 2,132,387.79 (-2%)

Materials Expenditures

Tracking since 2018

July 2021

	BDL Monthly Total	BDL YTD	BDL Year End (Year-over-Year Change)				
			2020	2019	2018	2017	2016
Amount Spent on Books	\$ 7,630.82	\$ 63,053.95 (+87%)	\$ 85,727.68 (+12%)	\$ 76,878.30 (-18%)	\$ 93,763.50	\$ 0.00	\$ 0.00
Amount Spent on Periodicals	\$ 0.00	\$ 602.81 (+254%)	\$ 5,390.61 (-5%)	\$ 5,663.99 (-20%)	\$ 7,085.59	\$ 0.00	\$ 0.00
Amount Spent on Audiovisual Materials	\$ 641.35	\$ 9,047.81 (+26%)	\$ 16,992.04 (+13%)	\$ 15,009.96 (-17%)	\$ 17,998.47	\$ 0.00	\$ 0.00
Amount Spent on Digital Resources	\$ 1,924.40	\$ 20,600.25 (+3%)	\$ 31,708.66 (+12%)	\$ 28,412.62 (-35%)	\$ 43,798.90	\$ 0.00	\$ 0.00
TOTAL Spent on All Library Materials	\$ 10,196.57	\$ 93,304.82 (+52%)	\$ 139,818.99 (+11%)	\$ 125,964.87 (-23%)	\$ 162,646.46	\$ 0.00	\$ 0.00

Other Expenditures

Tracking since 2018

July 2021

	BDL Monthly Total	BDL YTD	BDL Year End (Year-over-Year Change)				
			2020	2019	2018	2017	2016
Total Materials Expenditures	\$ 10,196.57	\$ 93,304.82 (+52%)	\$ 139,818.99 (+11%)	\$ 125,964.87 (-23%)	\$ 162,646.46	\$ 0.00	\$ 0.00
Total Staff Expenditures	\$ 71,937.11	\$ 571,235.90 (+3%)	\$ 956,326.38 (-18%)	\$ 1,172,756.92 (-20%)	\$ 1,469,560.33	\$ 0.00	\$ 0.00
Expenditures in other categories	\$ 72,876.84	\$ 488,317.34 (+97%)	\$ 483,894.79 (+37%)	\$ 353,231.25 (-16%)	\$ 422,747.74	\$ 0.00	\$ 0.00
TOTAL Expenditures in all Categories	\$ 144,813.95	\$ 1,100,240.04 (+8%)	\$ 1,819,492.24 (+1%)	\$ 1,797,240.67 (-13%)	\$ 2,054,954.53	\$ 0.00	\$ 0.00

Staffing

July 2021

	BDL Monthly Total	BDL YTD	BDL Year End (Year-over-Year Change)				
			2020	2019	2018	2017	2016
Total BDL Staff	34	35 (avg) (-3%)	36 (avg) (-3%)	37 (avg) (-8%)	40 (avg) (+5%)	37 (avg) (+9%)	34 (avg) (+17%)
BDL Staff with MLS Degree	5	5 (avg)	5 (avg) (+25%)	5 (avg) (-33%)	6 (avg) (+20%)	5 (avg) (+150%)	3 (avg)
Worked Full-Time Equivalents	21.68	22.94 (avg) (-15%)	24.53 (avg) (-4%)	25.78 (avg) (-4%)	26.92 (avg) (+8%)	24.91 (avg) (+41%)	17.90 (avg) (+13%)
Hours of Specialized Training for Staff (Tracking Since 1/2019)	24	413 (-26%)	1,170 (+119%)	534	0	0	0
Hours Volunteers Worked at the Library (Tracking Since 1/2019)	0	68 (+74%)	39 (-96%)	1,065	0	0	0

Outreach Services

Began 2018

July 2021

	BDL Monthly Total	BDL YTD	BDL Year End (Year-over-Year Change)				
			2020	2019	2018	2017	2016
Number of Patrons Served by Outreach Services	5	86 (+975%)	42 (-40%)	70 (-8%)	76 (+2,433%)	3	0
Number of Items Delivered to Outreach Patrons	26	375 (+793%)	242 (+10%)	220 (-64%)	606 (+2,231%)	26	0

Coldwater Branch Heritage Room

Stats part of Coldwater Branch totals above; shown here for convenience.

July 2021

	Heritage Room	BDL YTD	BDL Year End (Year-over-Year Change)				
			2020	2019	2018	2017	2016
Heritage Room Attendance	0	34 (-66%)	105 (-78%)	484 (-34%)	736 (+12%)	658 (-7%)	705 (+51%)
In-Person Reference Questions	0	7 (-91%)	80 (-81%)	412 (-42%)	708 (+29%)	550 (+664%)	72 (+140%)
Reference Telephone Calls	0	36 (-22%)	60 (-74%)	232 (-16%)	277 (-36%)	433 (+15%)	376 (+83%)
Online Reference Questions	0	14 (-13%)	34 (-48%)	65 (+8%)	60 (-5%)	63 (-24%)	83 (+8%)

Coldwater Branch Kids' Place

Stats part of Coldwater Branch totals above; shown here for convenience.
Tracking separately since April 2019.

July 2021

	Kids' Place	BDL YTD	BDL Year End (Year-over-Year Change)				
			2020	2019	2018	2017	2016
Kids' Place Attendance	603	2,054 (+2%)	2,385 (-75%)	9,710	0	0	0
In-Person Reference Questions	93	455 (+242%)	226 (-61%)	575	0	0	0
Reference Telephone Calls	27	163 (+159%)	156 (-30%)	224	0	0	0
Online Reference Questions	0	0	0	0	0	0	0

Coldwater Branch Teen Space

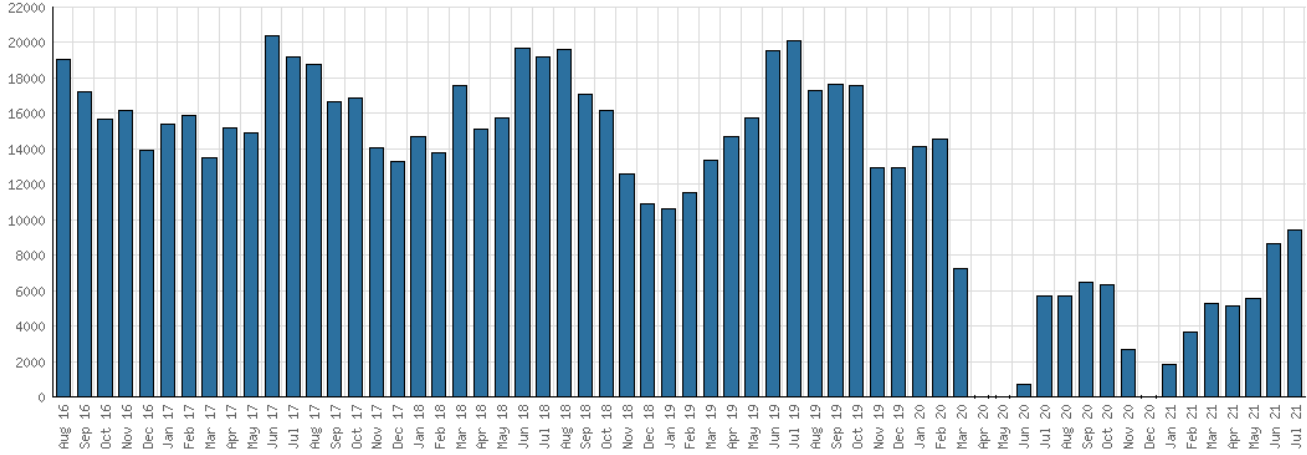
Stats part of Coldwater Branch totals above; shown here for convenience.
Tracking separately since April 2019.

July 2021

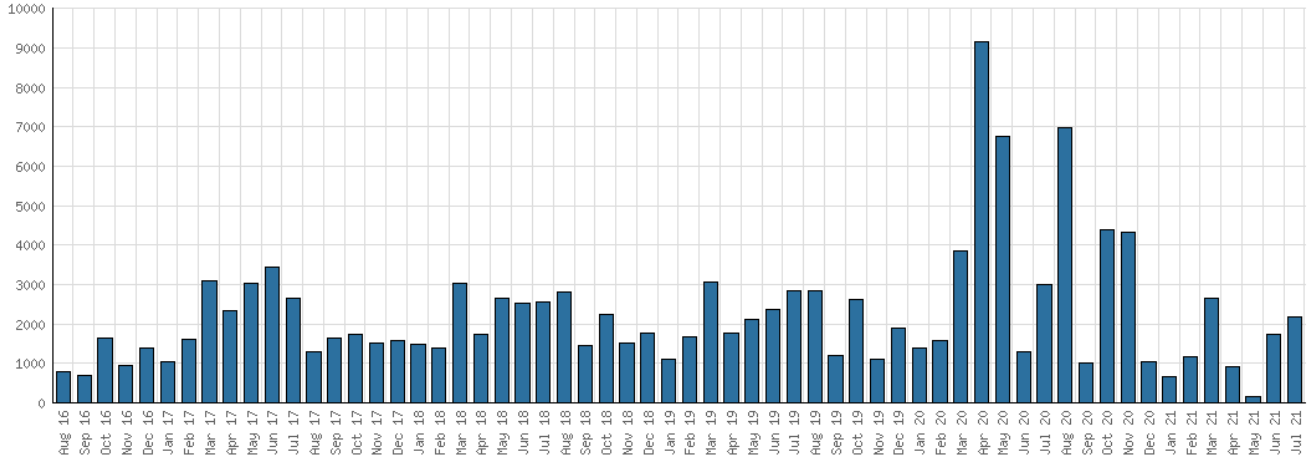
	Teen Space	BDL YTD	BDL Year End (Year-over-Year Change)				
			2020	2019	2018	2017	2016
Teen Space Attendance	271	574 (-26%)	845 (-80%)	4,172	0	0	0
In-Person Reference Questions	10	10 (+150%)	4 (-96%)	93	0	0	0
Reference Telephone Calls	0	0	0	0	0	0	0
Online Reference Questions	0	0	0	0	0	0	0

Selected Graphs 5-year Monthly Trends

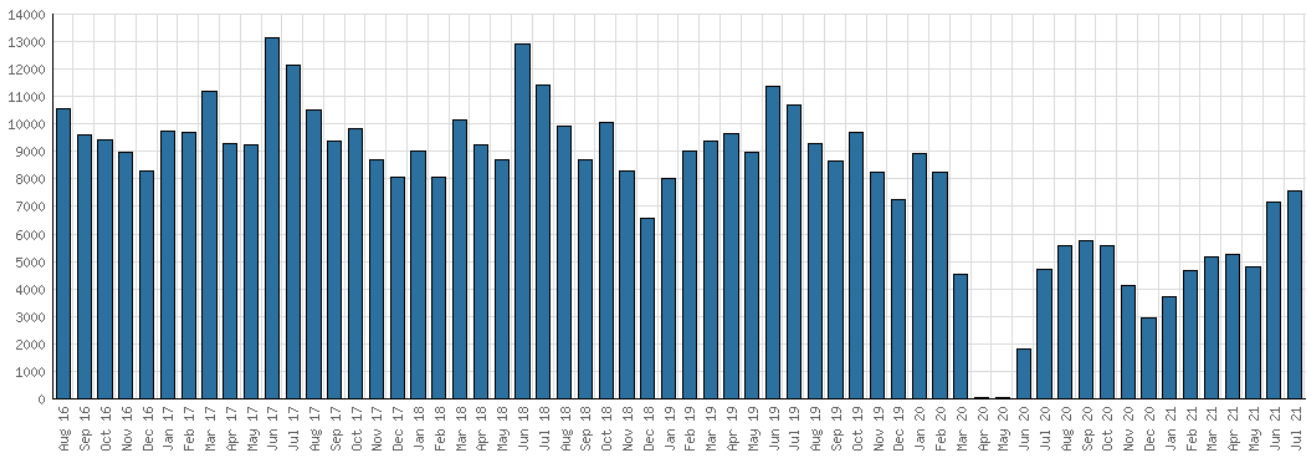
District Attendance



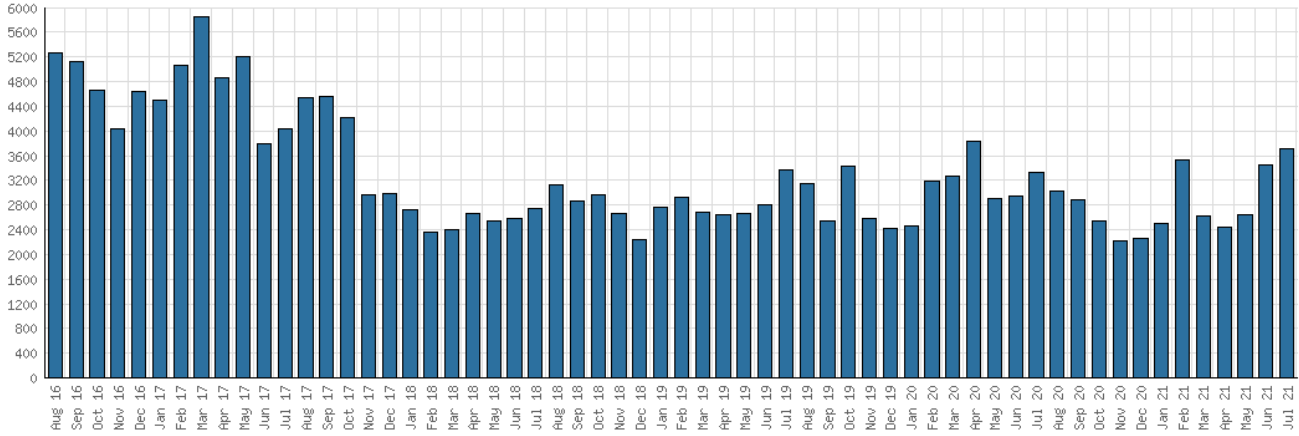
District Program Attendance



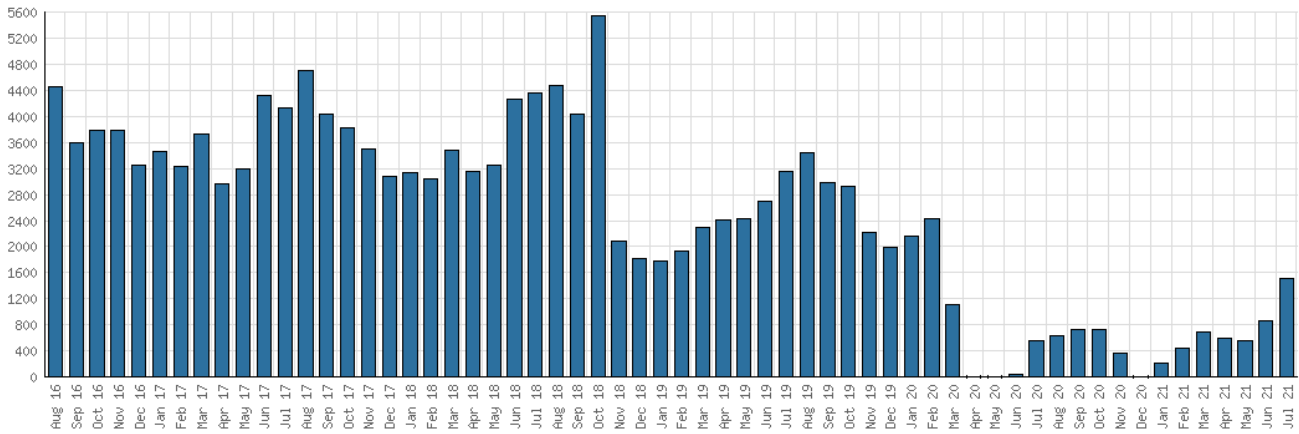
District Physical Checkouts



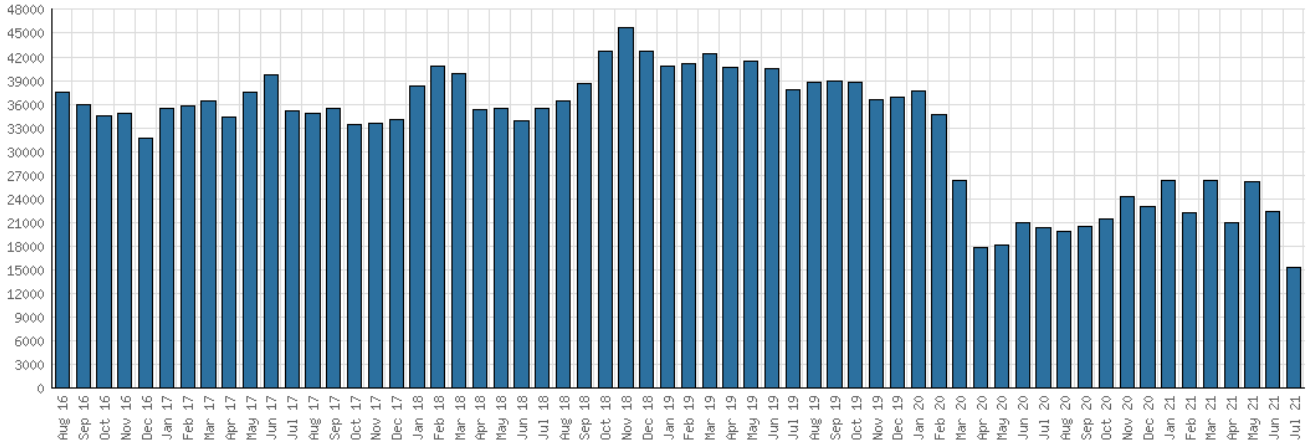
District Digital Usage



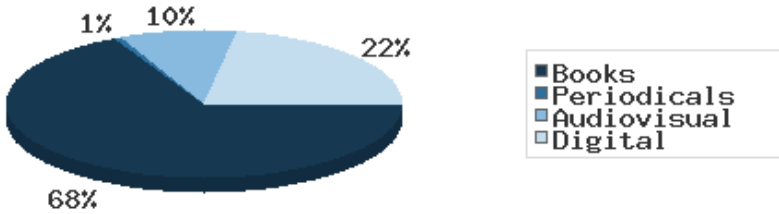
District Use of Library-Provided Computers



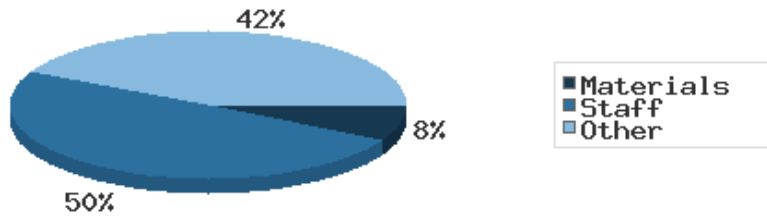
District One-Hour Sessions on Library Wifi



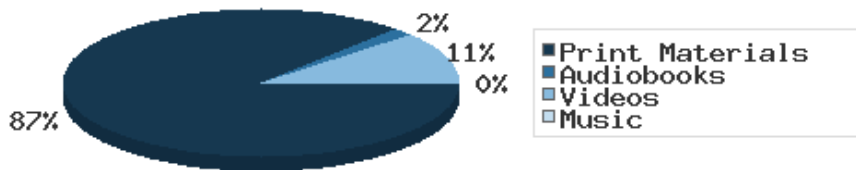
Year-to-Date Materials Expenditures



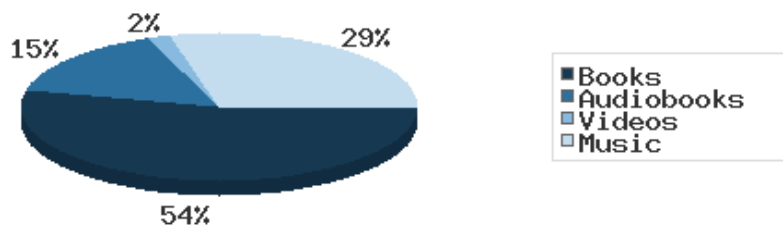
YTD Expenditures in all Categories



Physical Collection



Digital Collection



YTD Usage Breakdown of Digital Services

